

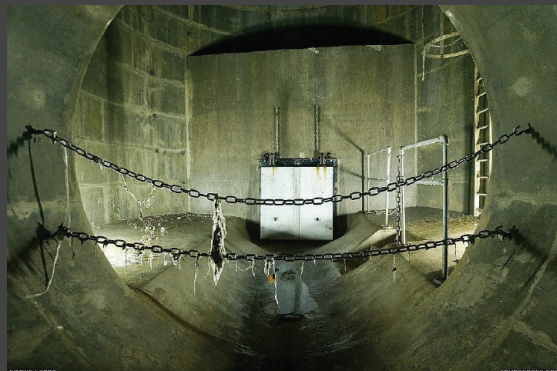
Manhole Safety Chain & Fixings Sewers for Adoption Safety Chain

Overview:

Manhole safety chains are predominantly used when the outflow pipes are greater than 600mm. They provide a lifeline to a worker, should they accidentally fall into the outflow pipe whilst in the manhole or chamber.

Usually, the safety chain assembly would be positioned as close to the end of the channel as possible, then allowing the worker to grab hold of the chain and prevent being carried further into the sewer system.

Through the use of the carabiner clip and eye-nuts, the chains can be lowered into the outflow pipe during maintenance or construction work.



Fully compliant with WRc Sewers for Adoption, 7th Edition & Sewers for Scotland 3rd Edition.

Meets the requirements set out in the Civil Engineering Specification for the Water Industry (CESWI) 7th Edition.

Grade 316 Stainless Steel

Supplied in assembled "kit" form, for speed of installation

Kits comprise of stainless steel chain, carabiner clip, eye-nuts and thru-bolts

Pipe Dia	Product Ref
525mm	CHAIN-525
600mm	CHAIN-600
675mm	CHAIN-675
750mm	CHAIN-750
900mm	CHAIN-900
1050mm	CHAIN-1050
1200mm	CHAIN-1200
1350mm	CHAIN-1350
1500mm	CHAIN-1500
1800mm	CHAIN-1800

Accessories:

- EasyRISER Manhole Ladder
- Retractable Handhold
- GRP Manhole Handrail
- M12x100mm Thru-Bolts



Head Office:

Shropshire House | Hortonwood 1 | Telford | Shropshire | TF1 7GN

Tel: +44 (0) 1952 504288 Email: sales@advancedinfrastructure.com

Web: www.advancedinfrastructure.com